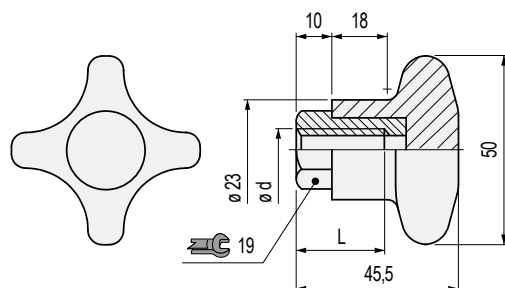


Part. S0182



■ Tightening knob



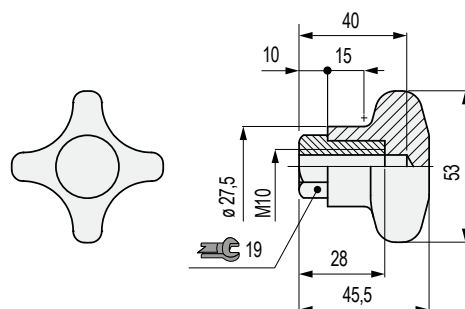
| Thread dia. d | Code | L mm |
|--|----------------|-----------|
| Threaded insert in austenitic stainless steel | | |
| M8 | 649961N | 23 |
| Threaded insert in nickel plated brass | | |
| M10 | 54911 | 28 |

- Material: knob in reinforced polyamide PA FV (black), threaded insert in nickel plated brass.
- Max recommended tightening torque: 2,5 Kgm (manual tightening), 4 Kgm (tightening with wrench). For high tightening torques apply a 19 mm wrench to the hexagon of the insert.
- Packaging: 12 pieces.

Part. S0183



■ Tightening knob



| Code |
|--------------|
| 54921 |

- Material: knob in reinforced polyamide PA FV (black), threaded insert in nickel plated brass.
- Max recommended tightening torque: 2,5 Kgm (manual tightening), 4 Kgm (tightening with wrench). For high tightening torques apply a 19 mm wrench to the hexagon of the insert.
- Packaging: 12 pieces.