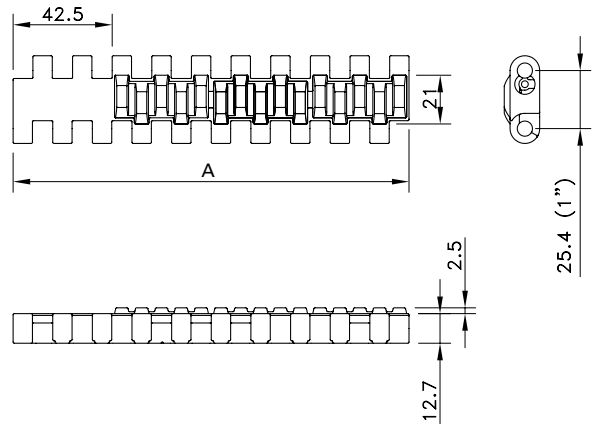
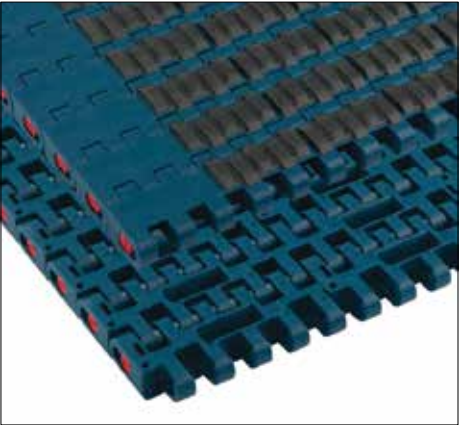


Supergrip Side-Indent 1005



Assembly	Belt Type	Code Number*	Temperature range °C		Working Load (max.)	Weight	Backflex Radius (min.)
			Dry	Wet	N/m (21°C)	kg/m²	mm
XLG-Acetal with PBT Pins							
Standard	XLG1005SGS	877.52.xx	-40 to +65	up to 65	35000	14.00	25
Double Positrack	XLG1000SG-XXMM_PT-1DP	877.53.xx					

* In code numbers xx corresponds with the belt width (A), starting with 12 for 255 mm, 13 for 340 mm and so on with 85 mm increments up to 6120 mm; see also page 208. Standard 100% rubber; other percentages and sizes on request.
A center indent of 85 mm is possible from 765 mm belt width, with steps of 170 mm.