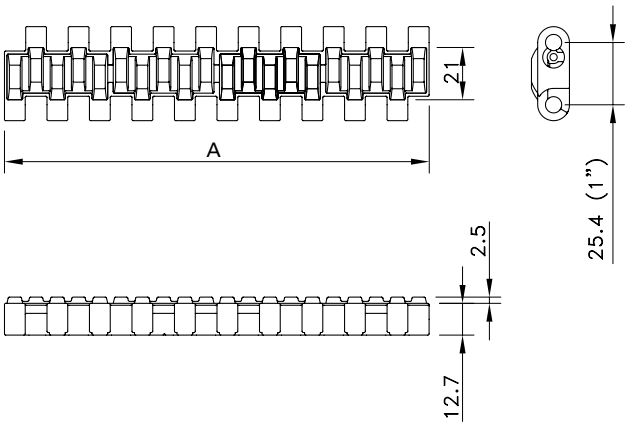
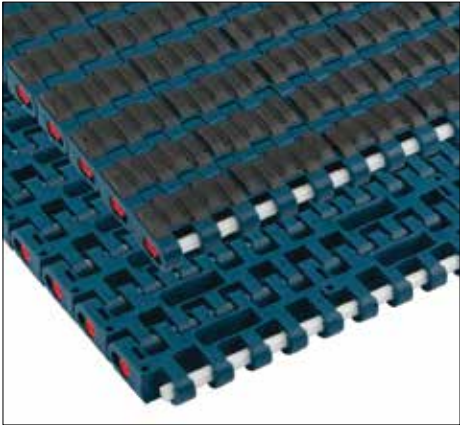
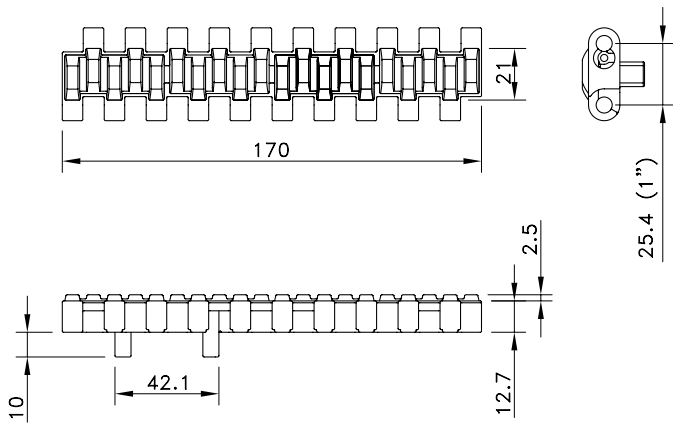
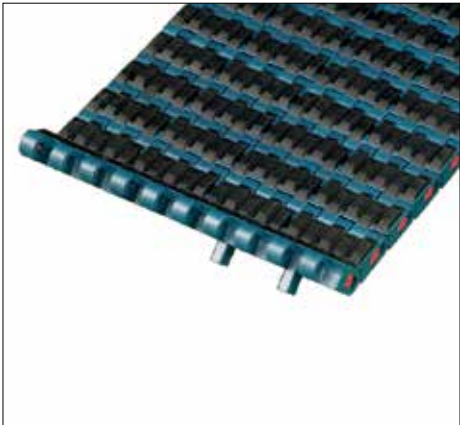


Supergrip 1005



Assembly	Belt Type	Code Number*	Temperature range °C		Working Load (max.)	Weight	Backflex Radius (min.)
			Dry	Wet			
					N/m (21°C)	kg/m²	mm
XLG-Acetal with PBT Pins							
Standard	XLG1005SGS	877.50.xx	-40 to +65	up to +65	35000	14.00	25
Double Positrack	XLG1000SG-XXMM_PT-1DP	877.51.xx					

* In code numbers xx corresponds with the belt width (A), starting with 11 for 170 mm, 12 for 255 mm and so on with 85 mm increments up to 6120 mm; see also page 208. Standard 100% rubber; other percentages and sizes on request.



1005 supergrip belt with double positrack on one side of the belt