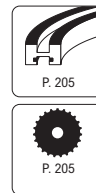
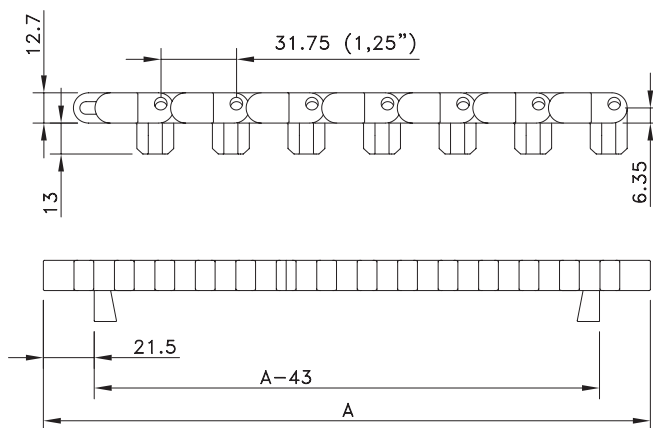
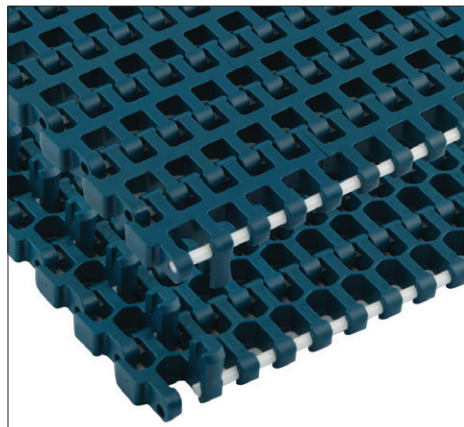


## Radius 1255



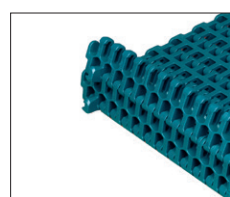
Assembly	Belt Type	Code Number*	Sideflex Radius (min.)	Temperature range °C		Working Load (max.)		Weight	Backflex Radius (min.)
			mm	Dry	Wet	N/m	N	kg/m²	mm
XLG-Acetal with PBT Pins									
Positrack Two Sides	RBP 1255 XLG	867.40.xx	2 x belt width	-40 to +80	-40 to +65	22000	2000	8.00	25
Flat	RB 1255 XLG	867.70.xx		-40 to +65					30
Supergrip Positrack	SG 1255 XLG RBP	867.53.xx							
WHT-Polypropylene with PBT Pins									
Positrack Two Sides	WHT 1255 RBP	869.40.xx	2 x belt width	4 to 80	4 to 65	11000	1200	5.20	25
Flat	WHT 1255 RB	869.90.xx		4 to 65					30
Supergrip Positrack	SG 1255 WHT RBP	869.53.xx							
BHT-Polypropylene with PBT Pins									
Flat	BHT 1255 RB	869.80.xx	2x belt width	4 to 65	4 to 80	11000	1200	5.20	25
WSM-Acetal with PBT Pins									
Positrack Two Sides	WSM 1255 RBP	868.40.xx	2x belt width	-40 to +80	up to 65	22000	2000	8.00	25
Flat	WSM 1255 RB	869.00.xx		-40 to +65					30
Supergrip Positrack	SG 1255 WSM RBP	868.63.xx							
SMB-Acetal with PBT Pins									
Flat	SMB 1255 RB	869.10.xx	2x belt width	-40 to +80	up to 65	22000	2000	8.00	25

\* In code numbers xx corresponds with the belt width (A), starting with 12 for 255 mm, 13 for 340 mm.

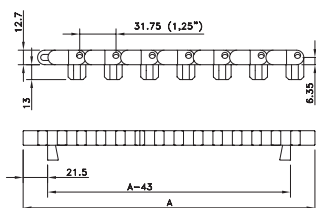
If you need flights, describe the belt by choosing from the required options listed in the 2<sup>nd</sup> column of the table:

Material	<b>WHT or BHT or WSM or SMB</b>	
Belt type	<b>1255 RBP or 1255 RBT or 1255 RB</b>	RBP for Positrack (only in WHT, WSM and SMB), RBT for Tabs (only in WSM and SMB), RB for Flat
Width (A)	<b>KM</b> - in mm	
Flights	<b>F3</b>	Standard height of 3" (76.2 mm) or special height in mm
Pitch between flights	<b>T..P</b>	Flights on every ..th row
Flight side-indent	<b>N..</b> (in mm)	Minimal 51 mm with 17 mm increments

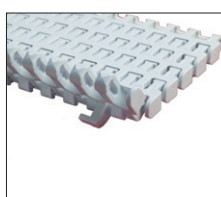
code nr. for special polyamide MCC3500 profile of 1.8 meters is 10609192, code for FDA approved MCC3600 polyester profile of 1.8 meters is 10361335.



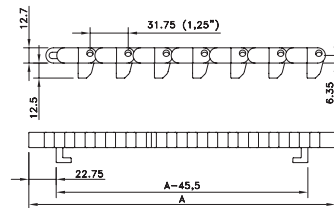
Positrack lugs on both sides



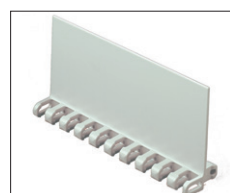
RBP



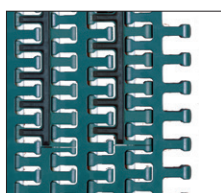
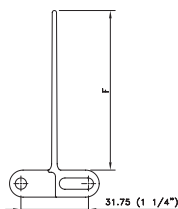
Tabs on both sides



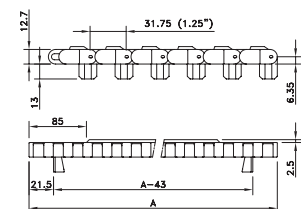
RBT



Flight for elevating Not for use in the U.S.A.



Supergrip for inclined conveying: Standard 100% rubber.



RBP