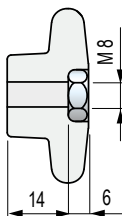


## • Example of application of version with hexagonal seat

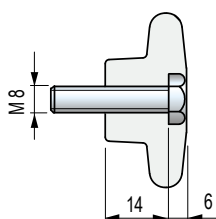
### Use with nut

Apply a standard hexagonal M 8 UNI 5588, DIN 934.



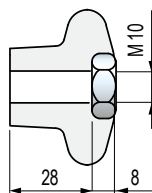
### Use with screw

Apply an hexagonal head screw M 8 UNI 5739, DIN 933, ISO 4017.



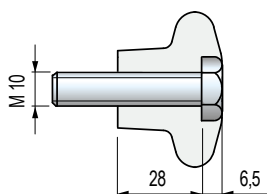
### Use with nut

Apply a standard hexagonal M 10 UNI 5588, DIN 934.



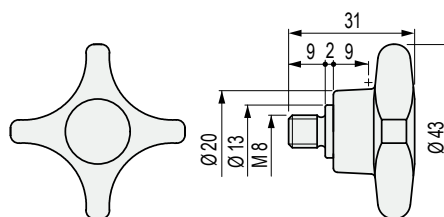
### Use with screw

Apply an hexagonal head screw M 10 UNI 5739, DIN 933, ISO 4017.

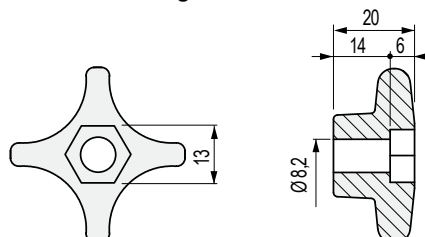


## ■ Tightening knob

### Version with threaded insert



### Version with hexagonal seat



Version

Code

With threaded insert

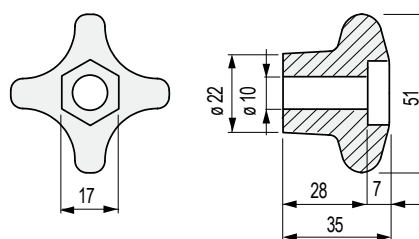
676392

With hexagonal seat

676402

- Supplied in reinforced Polypropylene PP FV, gives a better resistance to chemical agents.
- Material: knob in reinforced Polypropylene PP FV (grey), threadedinsert in austenitic stainless steel.
- Max admitted tightening torque: 1 Kgm (version with threaded insert).
- Packaging: 50 pieces.

## ■ Tightening knob



Code

Weight  
kg

Reinforced Polyamide PA FV (black)

693552

0,02

Reinforced Polypropylene PP FV (grey)

693562

0,02

- Economical version (supplied without tightening elements).
- The version in reinforced Polypropylene PP FV, gives a better resistance to chemical agents.
- Packaging: 50 pieces.

## Part. S0671



## Part. S0734



● Best Seller

● Standard

● On request: minimum quantity may apply. Consult our Customer Service for availability.

Item code for order = Part. + Code