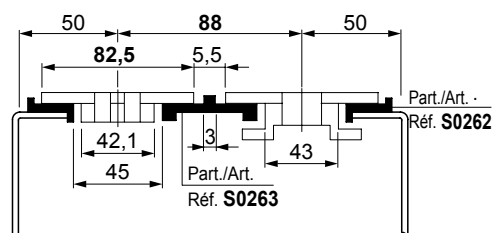


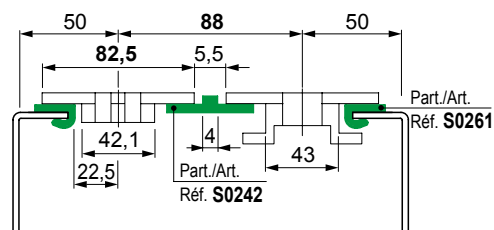
- **Material:** Polyethylene UHMWPE with molecular density 5.600.000 g/mol.
Characteristics: new material Polyethylene ULF™ brown red (UHMWPE): reduced friction coefficient, higher wear resistance.
- **Linear expansion coefficient:** $2 \times 10^{-4} \text{ } ^\circ\text{C}^{-1}$
Calculation of thermal expansion see Technical information.
- **Operating temperature Green Black:**
In air (- 40 to + 80 °C).
In hot water (+ 70 °C).
- **Operating temperature ULF™ brown red:**
In air (- 40 to + 45 °C).
In hot water (+ 45 °C).
- **Polyethylene ULF™ is FDA approved**
Polyethylene ULF™ complies with the Code of Federal Regulations Title 21, § 177.1520 "Olefin Polymers" of the Food and Drug Administration (FDA) of April 1, 2008.
- **Coefficient of friction between chain POM and wearstrip ULF™:** 0,08.
Note: for calculation of chain pull refer to Technical Support.
- **Position of guides.** See Technical information.

- **TableTop® chains** series 812 - 815 - 820 - 831 - 881TAB - 8811TAB - 879TAB - 880TAB

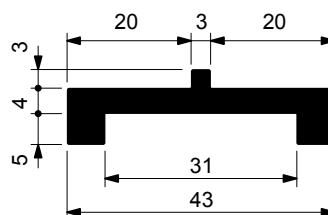
Chain width 82,5 mm (K 325) / Pitch 88 mm



Chain width 82,5 mm (K 325) / Pitch 88 mm
It differentiates because the gap between chain edges and the side rib of Part. S0242 is smaller.



Chain - guide profile



Material	Length metres	Code
UHMWPE		
Black	3	694321
	6	63681

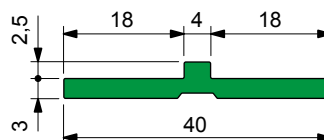
- Packaging: 96 metres.

Part. S0263



Reinforced version

Chain - guide profile



Material	Packaging metres	Code
UHMWPE		
Green	80	63671

- Standard packaging: coil.

Part. S0242



● Best Seller

● Standard

● On request: minimum quantity may apply.
Consult our Customer Service for availability.

Item code for order = Part. + Code