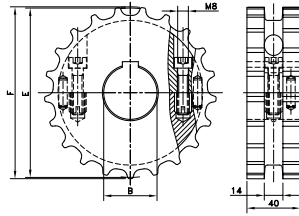


SS SH



Sprocket Type	Code Number	Number of Teeth	Bore	Pitch Diameter	Outside Diameter	Width (Teeth)	Hub Width	Hub Diameter
			B	E	F	C	A	H
			mm/inch	mm	mm	mm	mm	mm

Split Sprockets, Machined - SS SH

Metric Bores														
SS SH 17-25	754.62.11	17	25	105.5	104.5	40	40	--						
SS SH 17-30	754.62.21	17	30											
SS SH 17-35	754.62.31	17	35											
SS SH 17-40	754.62.41	17	40											
SS SH 19-25	754.62.12	19	25	117.3	116.3				40	40	--			
SS SH 19-30	754.62.22	19	30											
SS SH 19-35	754.62.32	19	35											
SS SH 19-40	754.62.42	19	40											
SS SH 19-50	754.62.62	19	50	129.3	130.0							40	40	--
SS SH 21-25	754.62.13	21	25											
SS SH 21-30	754.62.23	21	30											
SS SH 21-35	754.62.33	21	35											
SS SH 21-40	754.62.43	21	40	141.2	141.9	40	40	--						
SS SH 21-50	754.62.63	21	50											
SS SH 23-25	754.62.14	23	25											
SS SH 23-30	754.62.24	23	30											
SS SH 23-35	754.62.34	23	35	153.2	153.9				40	40	--			
SS SH 23-40	754.62.44	23	40											
SS SH 23-50	754.62.64	23	50											
SS SH 25-25	754.62.15	25	25											
SS SH 25-30	754.62.25	25	30	165.2	165.9							40	40	--
SS SH 25-35	754.62.35	25	35											
SS SH 25-40	754.62.45	25	40											
SS SH 25-50	754.62.65	25	50											
SS SH 27-25	754.62.16	27	25	129.3	130.0	40	40	--						
SS SH 27-30	754.62.26	27	30											
SS SH 27-35	754.62.36	27	35											
SS SH 27-40	754.62.46	27	40											
SS SH 27-50	754.62.66	27	50											
Inch Bores														
SS SH 21-1	754.66.12	21	1.000"	129.3	130.0				40	40	--			
SS SH 21-1 ³ / ₁₆	754.66.22	21	1.188"											
SS SH 21-1 ¹ / ₄	754.66.32	21	1.250"											
SS SH 21-1 ⁷ / ₁₆	754.66.42	21	1.438"											
SS SH 21-1 ¹ / ₂	754.66.52	21	1.500"											
SS SH 25-1	754.66.15	25	1.000"	153.2	153.9							40	40	--
SS SH 25-1 ³ / ₁₆	754.66.25	25	1.188"											
SS SH 25-1 ¹ / ₄	754.66.35	25	1.250"											
SS SH 25-1 ⁷ / ₁₆	754.66.45	25	1.438"											
SS SH 25-1 ¹ / ₂	754.66.55	25	1.500"											

For plastic chain series: 820, 831, SH, SHD.