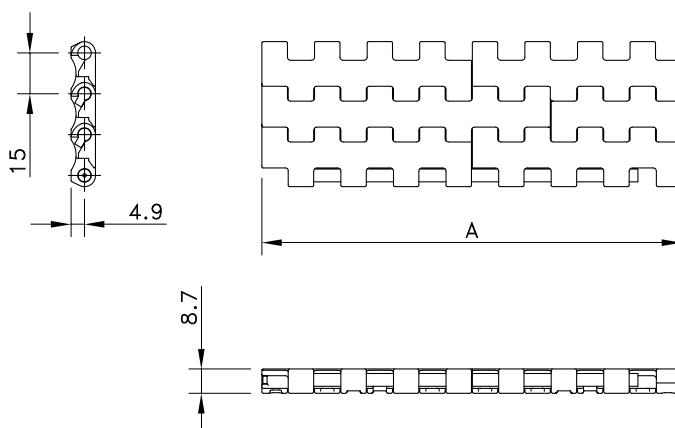
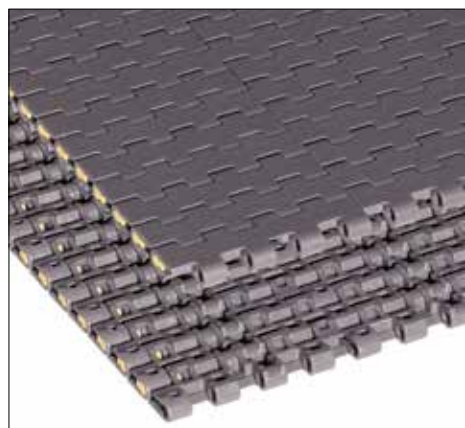


Flat Top 1505 Imperial Sizes



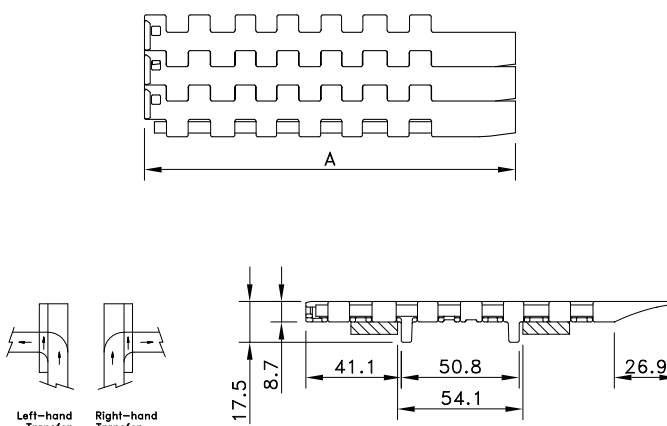
Assembly	Belt Type	Code Number*	Temperature range °C		Working Load (max.)	Weight	Backflex Radius (min.)
			Dry	Wet	N/m (21°C)	kg/m²	mm
HP-Acetal with PBT pins							
Standard	HP 1505	I1505HPKxx	-40 to +80	-40 to +65	13200	6.24	25
DTS Left	HP 1505 DTS SX	81413971					
DTS Right	HP 1505 DTS DX	81414111					
HT-Polypropylene with Polypropylene Pins							
Standard	HT 1505	I1505HTKxx	5 to 105	5 to 105	7300	4.52	25
WHT-Polypropylene with PP Pins							
Standard	WHT 1505	I1505WHTKxx	4 to 80	4 to 65	7300	4.50	25
WSM-Acetal with PBT Pins							
Standard	WSM 1505	I1505WSMKxx	-40 to +80	-40 to +65	13200	6.20	25
SMB-Acetal with PBT Pins							
Standard	SMB 1505	I1505SMBKxx	-40 to +80	-40 to +65	13200	6.20	25

* In code numbers xx corresponds with the belt width (A). Standard nominal widths of these belts begin at 3" with 3" increments, or optionally ¾" up to 96". NOTE: 3¾" is impossible. Example: I1505HPK06.75 is a 6.75" wide belt. See also page 208.

If you need flights or sideguards, describe the belt by choosing from the required options listed in the 2nd column of the table:

Material	WHT or WSM or SMB	
Belt type	1505	
Width (A)	K-.. (in inches)	
Flights	F1 or F2 or H..	Standard height of 1" (25.4 mm), 2" (50.8 mm) or special height in mm
Pitch between flights	T..P	Flights on every .. th row
Flight side-indent	N.. (in inches)	Minimal 1 ⅞" (48 mm) with ¾" (19 mm) increments
Sideguards	SG2	Standard height of 2"

Example: BLT 1505 K-12 H50 T4P N1⅞ SG2 is a 1505 Flat Top belt, made of blue polyethylene, width 12", special 50 mm high flights on every 4th row at 1⅞" from the sides and 2" high sideguards.



Dynamic Transfer System (DTS®) 1500-Series Imperial