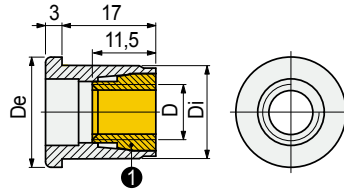


Part. **S0565**



for round tubes Dia. 18 - 20 mm

Expansion plugs



Tube dimensions ① Expansion cone

Outside mm	Thickness mm	Inside mm	Thread D	De mm	Di mm	Code
Ø 18	1,5	15	M8	18	15	698661
	2	14	M6	18	14	698671
Ø 20	1,5	17	M8	20	17	698681
			M10	20	17	698691

- Material: plug in polyamide PA (black), expansion cone in brass.
- Standard packaging: expansion cone is supplied separated from the plug.
- Weight: 0,01Kg.
- Packaging: 100 pieces.
- Max recommended tightening torque: 1 Kgm.

Part. **S0179**

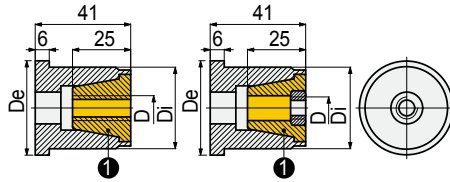


for round tubes Dia. 38 - 42,4 mm

Expansion plugs

Expansion cone in brass

Expansion cone in reinforced polyamide PA FV

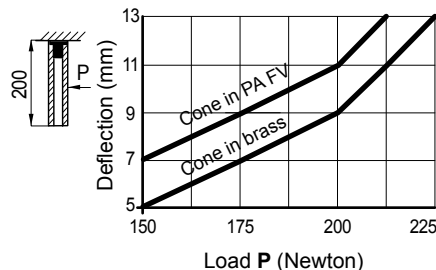


Tube dimensions ① Expansion cone

Outside mm	Thickness mm	Inside mm	Thread D	De mm	Di mm	Code
Expansion cone in brass						
Ø 38	1,5	35	M8	40	34,8	69513
			M10	40	34,8	69523
Ø 42,4	1,5	39,4	M8	44,5	39,2	69533
			M10	44,5	39,2	69543
Expansion cone in reinforced polyamide PA FV						
Ø 38	1,5	35	M8	20	34,8	54881
			M10	20	34,8	52641
Ø 42,4	1,5	39,4	M8	20	39,2	54891
			M10	20	39,2	52651

- Material: plug in reinforced polyamide PA FV (black), expansion cone in brass or in reinforced polyamide PA FV.
- Weight: 0,10 Kg.
- Packaging: 50 pieces.
- Max recommended tightening torque: 2,5 Kgm (for M8), 4 Kgm (for M10).

Deflection of Part. S0179



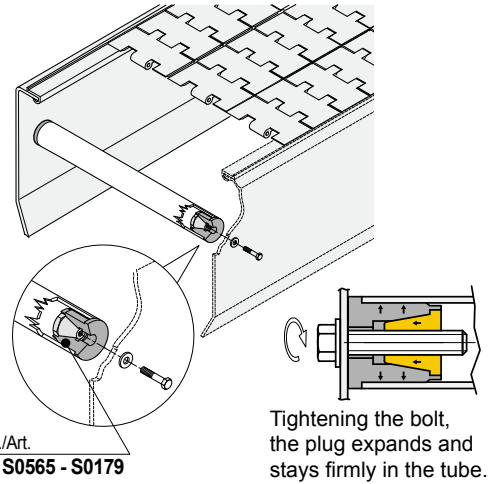
● Best Seller

● Standard

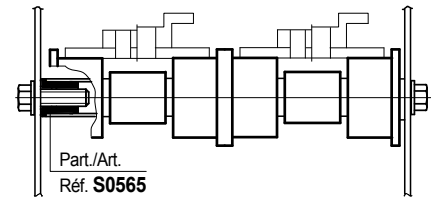
● On request: minimum quantity may apply. Consult our Customer Service for availability.

Item code for order = Part. + Code

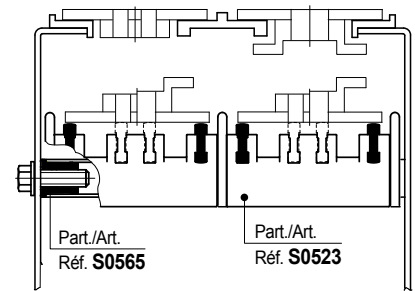
Assembly Part. S0565 - S0179



Application example of Part. S0565 for return chain rollers



Application example of Part. S0565 for serpentine return



Application example of Part. S0179 for supporting chain guide profile Part. S0366 - S0367 - S0368

